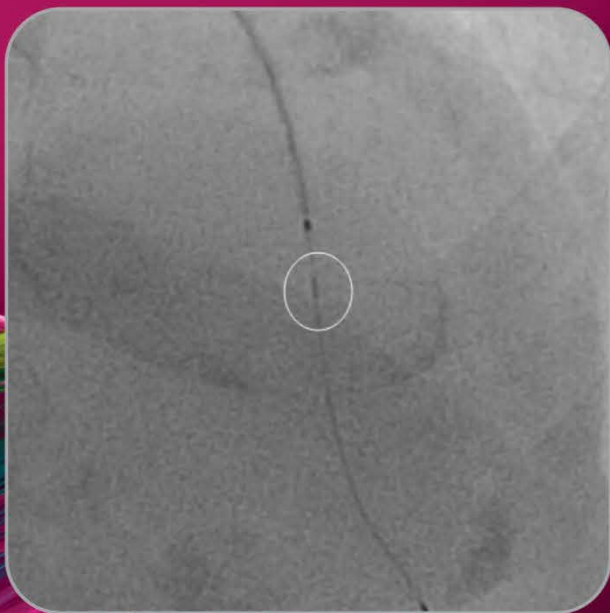


# Wilma<sup>TM</sup> NC

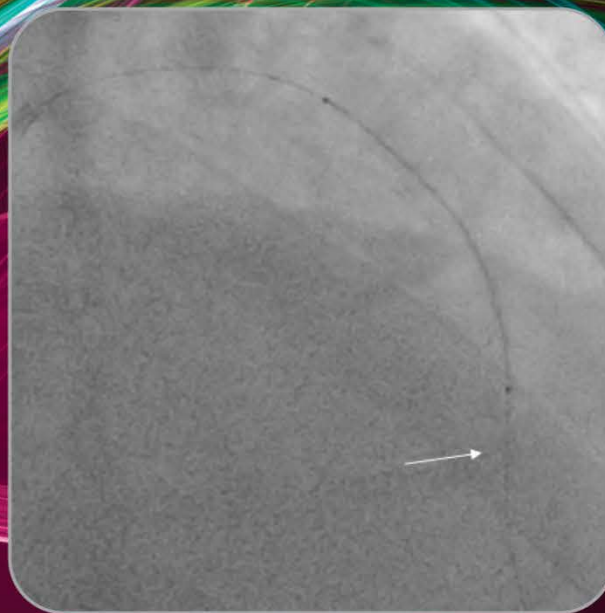
NON-COMPLIANT PTCA BALLOON DILATATION CATHETER

## Tapered Radio-opaque Tip

For better visibility of the balloon during PCI procedure



Wilma NC



Brand A

### Uniquely tapered Soft tip

- Ultra low profile for softer penetration
- Optimum Crossability
- Minimum vessel wall trauma

**Rated Burst Pressure**  
20 atm

*Intelligent engineering*  
**Excellent deflation time\***  
Average less than 8 seconds

\*Data on file

# Wilma™ NC

NON-COMPLIANT PTCA BALLOON DILATATION CATHETER

## Enhanced Pushability & Trackability

- Highly flexible distal shaft
- PTFE Coated Proximal Shaft

## Kink Resistant Shaft

### Growth Between Nominal and Rated Burst Pressure (3.0 mm Balloon)



### Technical Specifications

Guiding Catheter Compatibility: 5F

Balloon Material	Nylon 12
Balloon Fold	3-fold memory
Balloon diameter	2mm-4.5mm
Balloon length	6mm-29mm
Tip entry profile	0.016" (0.41mm)
Excellent deflation time	Average less than 8 seconds
Shaft diameter	Proximal 1.95F, Distal 2.67F
Catheter length	140cm
Rapid exchange length	25cm
Markers on the proximal shaft	90cm and 100cm
Maximum recommended guidewire	0.014" (0.36mm)
Guidecatheter compatibility	5F Compatible

### Size Matrix

Balloon Diameter	Balloon Length (mm)							
	06	08	10	12	15	20	25	29
2.00 mm	✓	✓	✓	✓	✓	✓	—	—
2.25 mm	✓	✓	✓	✓	✓	✓	—	—
2.50 mm	✓	✓	✓	✓	✓	✓	—	—
2.75 mm	✓	✓	✓	✓	✓	✓	✓	✓
3.00 mm	✓	✓	✓	✓	✓	✓	✓	✓
3.50 mm	✓	✓	✓	✓	✓	✓	✓	✓
4.00 mm	—	—	✓	✓	✓	✓	✓	✓
4.50 mm	—	—	✓	✓	✓	✓	✓	✓

✓ Available sizes



Sahajanand Medical Technologies Pvt. Ltd.  
 "Sahajanand Estate", Wakharia Wadi, Near Dabholi Char Rasta, Ved Road, Surat 395004, Gujarat, INDIA  
 Tel.: +91 261 3060606 Fax: +91 261 3060607 Email: contact@sahmed.com Visit us at: www.smtpl.com  
 • CIN: U33119GJ2001PTC040121

WINBROEND1 REV 02, 01NOV2015